

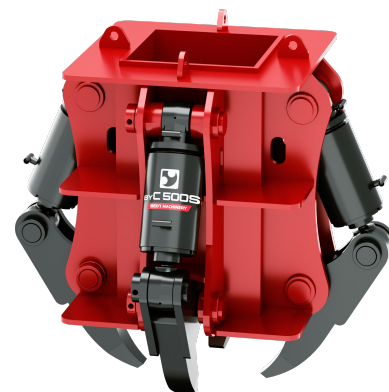
主要特点 MAIN FEATURE

- 01** 轻质设计使用高强度材料减轻重量
Lightweight design uses high-strength materials to reduce weight
- 02** 4个可更换破碎爪在每个切割点上施加相同的力,提高切割功率和精度。
4 replaceable crushing jaws apply equal force on each cutting point, increasing cutting power and precision.

* 适用于高铁桥梁, 工民建筑等桩基工程

* Applicable to pile foundation projects such as high-speed rail bridges and industrial buildings

适用范围
scope of application



FOUR CLAWS PILE BREAKER 四爪破桩机

PARAMETER

| 型号 Model | 单位 Unit | BYC500S (方形 SQUARE) | BYR1100S (圆形 ROUND) |
|--|---------|------------------------|------------------------|
| 破碎齿最大加压力 Maximum pressure of crushing teeth | KN | 320 | 320 |
| 单根油缸最大流量 Maximum flow of single cylinder | L/Min | 20 | 20 |
| 破碎齿宽度 Width of crushing teeth | mm | 150 | 150 |
| 液压油缸行程 Stroke of hydraulic cylinder | mm | 180 | 180 |
| 单次截桩高度 Height of single pile cutting | mm | 300 | 300 |
| 配套工程机械吨位 Tonnage of supporting construction machinery | T | ≥20 | ≥30 |
| 液压油缸最大压力 Maximum pressure of hydraulic cylinder | MPa | 32 | 32 |
| 破桩范围 Scope of crushing pile | mm | 300-550 | 800-1100 |
| 整机重量 Weight of the whole machine | KG | 2500 | 3500 |

